

## PROS

- A well constructed plan with some slack or contingency and a clear critical path enables controlled management of the project
- You have a basis on which to react to changes and challenges alike



## Your plan is your friend

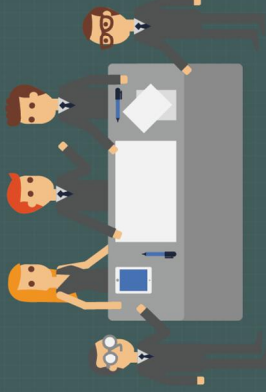


## CONS

- No contingency means you have no way of compensating for the inevitable problems that occur in all projects
- If you don't know the critical path, you don't know if a problem task will delay the whole project
- If you don't know the critical path you can't focus on the key tasks to keep you on track
- Without a plan you have no control

## PROS

- Lead by example
- Select a balanced team
- Understand gaps in team so you can compensate
- Communicate, communicate and communicate some more
- Influence, persuade and negotiate - don't give orders



## Don't forget the people

People deliver projects with people, for people and impacting people

## CONS

- People resist if they are ignored
- Consider all sides of an argument
- Personal agendas get in the way
- Office politics are the root cause of many problems
- You can't communicate effectively without listening (and hearing and understanding)

## PROS

- Releases resources to move on to the next project
- Lessons learned can increase everyone's knowledge and effectiveness
- Residual tasks and risks can be handed off to the business in an agreed manner



## Close the project down properly

## CONS

- Projects ramble on absorbing resources
- Lessons not learned
- Business becomes dependent on project resource